

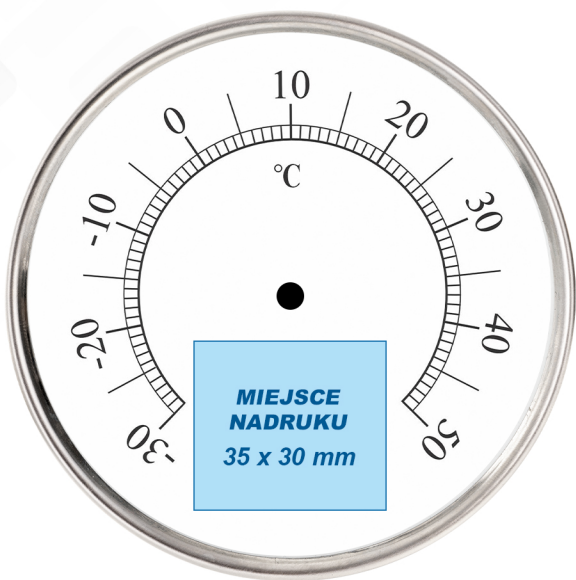
TERMOMETR THERMO 19/27



POLE NADDRUKU / WYMIARY

100 mm

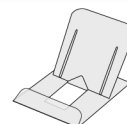
100 mm



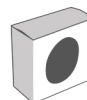
W ZESTAWIE



TERMOMETR



STOJAK



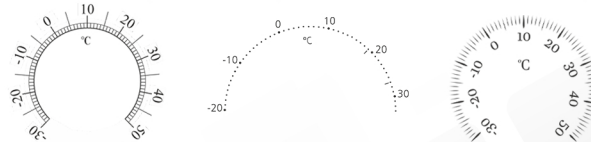
OPAKOWANIE
KARTONIK

MOŻLIWOŚCI ZNAKOWANIA

- Indywidualny nadruk kolorowego logo







- Indywidualny zakres temp. na tarczy



- Zakres temperatury na tarczy

- 30°C +50°C
- 20°C +40°C
- 10°C +30°C

PAKOWANIE

Ilość	Waga
 225 szt.	 30 kg
 3864 szt. (karton 483 szt.)	 540 kg

